



IMPACT REPORT 2023

eisen  family
PRIVATE FUND



CONTENTS

03 FROM THE CHAIR

**04 MISSION, VISION,
VALUES & PRINCIPLES**

**05 PILLARS &
PARTNERSHIPS**

**06 FY23 GIVING
SNAPSHOT**

**08 PARTNER
SNAPSHOTS**

- REGEN MELBOURNE
- CHILDREN'S GROUND
- STORY FACTORY
- ALL THINGS EQUAL
- NATIONAL JUSTICE PROJECT

**20 IMPACT
PARTNERS**

21 ACKNOWLEDGEMENTS

a reflection

FROM THE CHAIR

The year has sped by and we've been honoured to continue walking alongside many of our inception partners, learning more about the issues and context informing their strategies and operations, and supporting their incredible work. Throughout 2023, we have been thinking deeply about the value we can offer beyond funding alone. This has led to more engaged ways of working with our partners, including through advocacy, advisory and referrals.

One example of this is our commitment to Children's Ground, an organisation driving improved community outcomes in Central Australia through its unique wrap-around approach which places First Nations knowledge systems, culture and agency at the centre of everything it does. Having seen their learning on country and health education work firsthand in Alice Springs in 2022, our family was thrilled to host an event at our home in April 2023, to introduce Children's Ground to our personal networks. We have also committed to being actively involved in the Kele Mpe! funder collaboration over the next 10 years (because we know it takes that long to work productively on complex issues), aiming to advance the case for Children's Ground as a model worthy of co-investment with other funders, including government.

As part of our commitment to ensuring Indigenous people have the same outcomes as other Australians, in 2023 we joined a group of private funders supporting the YES campaign in the referendum on establishing a First Nations Voice to parliament. The return of a NO result has been extremely painful for the majority of Indigenous Australians who, along with millions of non-Indigenous people, voted YES in the referendum. Although deeply disappointed by the outcome, we remain committed to supporting organisations that listen to First Nations people about matters that affect their lives.

Justice is one of our core values and an orienting lens in our philanthropy. Attending the AEGN's national conference in Sydney earlier this year brought me up to speed not only on current climate science, but the reality that the impacts of climate change are not being borne equally by all. Climate justice forces us to recognise that the people who have contributed least to the changing climate are being affected by it most, while being least likely to protect themselves from the impacts. This makes the work of our climate partners, such as Groundswell and Environmental Leadership Australia, all the more urgent.

At a city level, Anthony and I were delighted to join other supporters this year at a dinner celebrating the groundbreaking progress of Regen Melbourne, an alliance for ambitious collaboration spanning 180 organisations working towards a regenerative Melbourne.

Finally, my sincere thanks to the leaders and teams driving the community organisations we are privileged to call partners in 2023. You are responding with integrity, humanity and innovation to some of the most pressing problems of our times, and for this we are deeply grateful. Our appreciation too, for all who assist us in the work of the Eisen Family Private Fund, in particular Barry Odes, our steadfast Responsible Person, and Fiona Higgins, our Executive Officer, who continues to teach us so much and manages a huge volume of research and actions to support our current and prospective partners. Fiona's passion, care and impact is remarkable and we are privileged and grateful to work together.

Samantha Eisen

**Samantha Eisen, Chair
Eisen Family Private Fund**



OUR MISSION

Empowering the pathbreakers of today, to build a more balanced and sustainable tomorrow.

OUR VISION

A compassionate, creative and equitable world, in which people and planet flourish.



OUR PRINCIPLES

01. WE COLLABORATE

As just one cog in the social change wheel, we seek out strategic collaborations for collective impact.

02. WE GO FOR THE GAPS

We focus where philanthropy is best applied, leveraging our finite resources for outsized impact.

03. WE HONOUR OUR FAMILY AND OUR CULTURE

We delight in involving our family in giving, and honour our cultural heritage by contributing to Jewish community life.

04. WE GO IN TRUST

We acknowledge our partners as expert in their fields, walking alongside them with humility and respect.

OUR VALUES

HUMANITY

Empathy sits at the heart of our work. Compassion is core to our strategy. Kindness is our culture.

CONNECTION

We listen deeply to community. We embrace radical honesty. We turn up to our partnerships with authenticity and commitment.

INNOVATION

We take considered risks, backing entrepreneurial ideas and people. We support outstanding leaders and ambitious agendas for social change.

JUSTICE

We strive to redress the pressing needs of an inequitable present, while pursuing necessary systemic changes to deliver a fairer future.

PILLARS & PARTNERSHIPS



CLIMATE

Climate change isn't a political issue; it's a human one. We co-invest in tactical opportunities where private funds can catalyse significant public good, pursuing system-level solutions in the mitigation window to 2030.

FY23 PARTNERS

- Groundswell Giving
- Regen Melbourne
- Regenerators (DAF)



CAPACITY

We back brilliant minds with bold agendas to advance human health and wellbeing. We focus on prevention, compassionate care and collaborations of global significance, offering long-term capacity-building support to a select portfolio of medical and mental health partners.

- Children's Ground
- Australian Sports Foundation Charitable Fund - Hakoah
- Alannah & Madeleine Foundation



CREATIVITY

We invest in creativity as the currency of the future. By reducing barriers to access, and growing and scaling quality creative programming in education settings and beyond, we seek to unleash the creative potential of rising generations.

- Musica Viva
- Schools Plus
- Story Factory



COMPASSION

We recognise the transformative power of compassion and gratitude, and aim to cultivate both as essential human capabilities for grappling with global complexity. We also embrace the Jewish principles of **chesed** (kindness) and **tzedek** (justice), serving urgent human need and shorter-term social justice priorities with our strategic small grants program.

- All Things Equal
- Cancer Chicks
- Wizo NSW



CURIOSITY

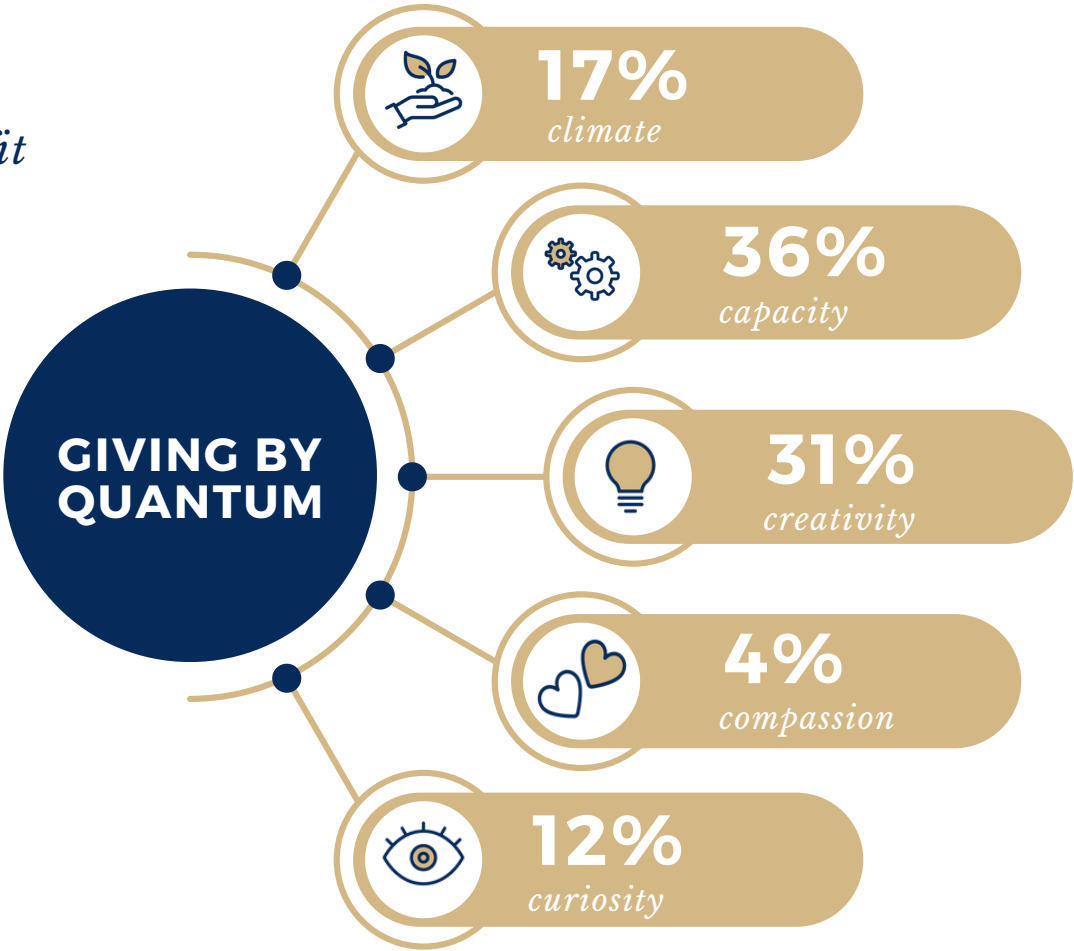
We deploy curiosity capital, responding to immediate needs and compelling impact opportunities. We have been known to disrupt our own strategy to support ideas and initiatives that fall beyond it.

- Australians for Indigenous Constitutional Recognition
- National Justice Project
- Sholem Alecheim College

FY23 GIVING SNAPSHOT

15

not-for-profit
partners



GIVING BY UNITED NATIONS SUSTAINABLE DEVELOPMENT GOALS



GIVING BY GEOGRAPHY



10

*national
partners*

05

*state-based
partners*



GIVING BY DEMOGRAPHY



05

**CHILDREN
& YOUTH**
(0-18 yrs)



02

YOUNG ADULTS
(19-29 yrs)



08

ALL AGES
(general)

CLIMATE SNAPSHOT



REGEN MELBOURNE

Our story starts at the end of 2020, in the wake of the Black Summer and the COVID-19 lockdowns. In this disruptive context a small number of organisations, led by Small Giants Academy, Lord Mayor's Charitable Foundation, Coalition of Everyone and Circular Economy Victoria, came together around a simple question: **how can we better serve Greater Melbourne?**

Since then, with the support of catalytic and visionary philanthropists like the Eisen Family Private Fund, Regen Melbourne has grown to become an alliance of 180 organisations across business, universities, government and community organisations. Together, we have built a portfolio of wildly ambitious projects that aim to raise our collective ambition and pursue systemic change.

Each project has a unique group of partner organisations and Regen Melbourne acts as a backbone function, maintaining coherence and driving the collaboration. Put simply, Regen Melbourne is an engine for ambitious collaboration in service of Greater Melbourne.

PROJECTS

- **Swimmable Birrarung:** regenerating the Birrarung Yarra River as the life-force of our city
- **Participatory Melbourne:** revitalising civic life, belonging and social cohesion
- **Ending Food Waste:** creating a safe and resilient food system
- **Regen Streets:** unleashing a wave of hyper-local regeneration
- **Measuring What Matters:** creating a new and holistic measure of progress



Swimmable Birrarung

a closer look

SWIMMABLE BIRRARUNG

Working with more than 40 partner organisations (including Melbourne Water, Wurundjeri Woiwurrung Cultural Heritage Aboriginal Corporation, Yarra Riverkeeper Association, ARUP and many others) we have created six workstreams with tangible pathways to regeneration. These include storytelling and reconnection, business and capital, swimming activations, campaigns, policy and governance, and water health.

Each workstream has commenced new and systemic projects that we are pursuing as an alliance. These include a floating sauna, a Birrarung River Festival, an integrated water quality measurement system, appropriate technology interventions, and a new finance mechanism to unlock private capital in service to the river. Taken together, this portfolio of interventions is designed to regenerate the Birrarung Yarra River.

MEASURING WHAT MATTERS

Over the last 18 months, we have been developing the Greater Melbourne City Portrait as part of our Measuring What Matters project: an interactive, practical, holistic digital dashboard for progress in our city.

Working with dozens of experts across six universities and a range of industry, government and civil society partners, we have run countless workshops and roundtables to develop principles, indicators and targets across 14 social dimensions of progress, as well as a range of ecological dimensions.

The City Portrait digital platform was launched in November 2023 at an event at the State Library attended by more than 300 people. The 2023 City Portrait reveals that our liveability as a city is not evenly distributed and that the liveability we do have is putting way too much pressure on our environment.



CAPACITY SNAPSHOT



CHILDREN'S GROUND

The Eisen Family Private Fund's vision to 'empower pathbreakers' has led to a 10-year commitment to Children's Ground, supporting our bold ambition to create justice and equity for First Nations people and the next generation of children.

The current daily reality facing First Peoples is filled with devastating injustices. Our families routinely experience health and education inequities, trauma, racism, economic impoverishment, homelessness, incarceration and child welfare as a norm in their lives. Access to basic services and opportunities either don't exist or are poor, and the systems our children face in education are not designed for them to succeed.

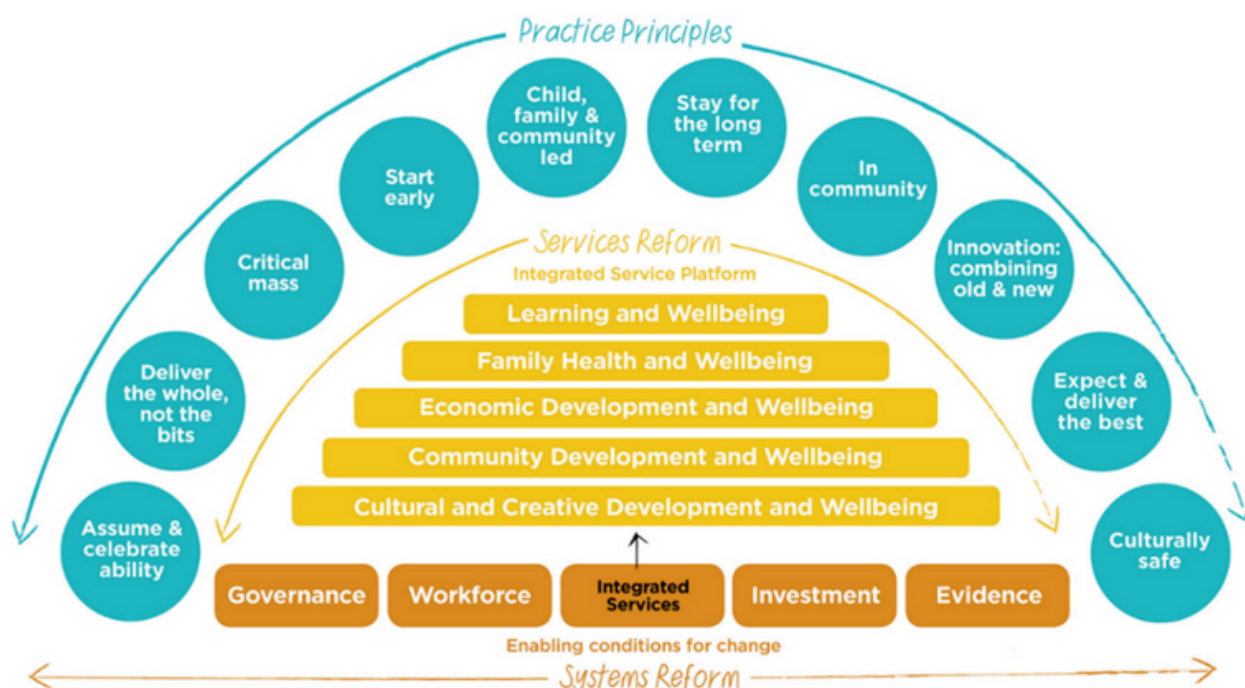
The Children's Ground Approach is an alternative system; a practical form of voice that prioritises First Peoples governance, culture and strategy. It recognises the systems of knowledge that continue to live in these amazing lands, from which we all can learn. It combines this cultural expertise with Western expertise to build a platform that offers children and families opportunities have not been available in the past.



“At Children’s Ground we have a bold ambition to transform the system, to create justice and equity for First Nations people and the next generation of children.”

CAPACITY

THE CHILDREN'S GROUND APPROACH



We have solutions and evidence of impact across key areas of early childhood, employment, and local empowerment and governance. Leadership is coming from philanthropy, including from the Eisen Family Private Fund, in choosing to back our model and endorse our voice. This leadership is not just about funding; it's about walking alongside us, understanding deeply the barriers and challenges facing our families, and working in partnership with us to achieve sustainable change. This requires long-term commitment and recognition that systemic change does not, and will not, happen overnight.

The 10-year commitment from the Eisen Family Private Fund is the first of its kind for Children's Ground; they join a small group of partners who have been on this journey with us for between five and 10 years. The partnership is supporting our team to deepen the Children's Ground Approach in current sites and expand to new sites, to encourage new donors, to support our engagement with government and to showcase what is possible through community-led innovation.

As part of their commitment, the Eisen Family Private Fund has been instrumental in establishing a philanthropic collaborative initiative which we have called the Kele Mpe! funder collaboration. This is a special kind of engaged philanthropy with a group of funders who are leaning in to help support Children's Ground to achieve our strategic goals. Kele Mpe! is an Arrernte phrase meaning 'let's go', because it's clear that our communities simply cannot wait any longer. We must create change for our children now.

*a closer look***THE KELE MPE! COLLABORATION**

Right now, we are facing a critical time with the passing of our Elders who were born on country and have held this uninterrupted system of knowledge. As they pass, the risk to culture and language is enormous. They have left their legacy and their vision for us to realise - the strength and continuation of identity, culture and language through future generations - as the foundation to their life long wellbeing.

This 10-year commitment from the Eisen Family Private Fund supports us to respond to this reality, helping us preserve the legacy of Elders and giving us the ability to do what we do in the way we need to do it to achieve change. It gives us confidence, it shows trust and an understanding of the reality of what it takes to achieve change in the face of intergenerational trauma.

Children's Ground is responding to 240 years of relentless discrimination and trauma that requires a complex and layered response to really achieve the empowerment and justice our leaders have been seeking. We are just at the beginning of an amazing partnership with the Eisen Family Private Fund, and we look forward to celebrating our achievements together over the next 10 years.



CREATIVITY SNAPSHOT



STORY FACTORY

In 2022, the Eisen Family Private Fund generously committed to funding the next chapter of Story Factory's growth through the national rollout of our digital creative writing programs in 2023-2024. These programs grew out of the success of our digital programs developed during the pandemic, representing a unique opportunity to reach marginalised young people we would otherwise not be able to work with, right across the country.

With your support, we built a new digital team and fitted out a digital studio. We created our new brand, Story Factory Digital, and designed and developed our first suite of programs, which we successfully piloted in late 2022 before commencing a full rollout in 2023.

To date, we have delivered more than 100 digital creative writing programs at 41 schools, reaching 2,861 marginalised students in seven states. Feedback has been consistently positive, with 77% of surveyed students reporting they enjoyed our workshops, and 92% of surveyed teachers reporting they changed their practice as a result of our workshops.

PROJECTS

- **Story Factory Digital:** created our new brand and designed and developed our first suite of programs
- **Creative Writing Programs:** delivered 100 digital creative writing programs at 41 schools in seven states, reaching 2,861 marginalised students
- **Prescription Poetry:** currently running our first nation-wide poetry project



*a closer look***STORY FACTORY DIGITAL**

One of the key challenges of this project has been reaching our ambitious target of 6,300 students in 2023. Story Factory has a strong reputation in Sydney and Western Sydney, but building awareness of our offerings in new areas has been harder than anticipated, resulting in lower enrolments. We also initially planned to charge schools a nominal fee for our digital programs, but have had limited success in this area, despite multiple targeted marketing strategies and campaigns. Recognising this low return on investment, we no longer plan to charge for programs and are instead focusing on exploring new opportunities to boost enrolments.

We have had some key successes in this area, including developing themed digital workshops for Harmony Week in March 2023, which were immediately booked out by teachers at 18 schools, reaching over 600 students. In partnership with Reconciliation NSW, we also created a video to support young people to write stories for the Schools Reconciliation Challenge, which reached 190 teachers at 170 schools, and was made available to over 16,000 students across the state.

We are also currently running our first nation-wide poetry project, Prescription Poetry, as part of our digital engagement strategy, in which we expect to run workshops with approximately 700 young people, a selection of whose work will be published on our website.



PHOTO: JACQUIE MANNING

COMPASSION SNAPSHOT



ALL THINGS EQUAL

All Things Equal exists to bridge the gap between people with disability and the wider community through purposeful training and award wage employment in the hospitality industry. Unemployment rates for people with disability are double that of people without disability, and that statistic hasn't changed in 29 years. We exist to play a part in the solution.

Launched in 2021, we began with a single café in Balaclava. Over time, we have learned the sheer need for our work, and the huge gap in the market for creating real world work expectations in a real world setting, combined with award-wage employment.

Since inception, we have created employment for 28 people with disability and paid over \$300,000 in award-based wages. And we're just getting started.



“Since inception, we have created employment for 28 people with disability and paid over \$300,000 in award-based wages.”

With support from the Eisen Family Private Fund in 2022 and 2023, we have transformed to go beyond a destination for employment, and into an employment pathway model; creating the training, structure and experience that an individual needs to eventually transition into open employment. We provide this training and experience through our cooking school and paid work in our café and catering services. We are now building partnerships with open employers to complete this transition pathway.

LOOKING AHEAD

Our goal is to become a financially sustainable enterprise that predominantly generates its revenue through trade in our café and catering services. With the support of the Eisen Family Private Fund, we have built our catering to be a gorgeous, scalable offering that services the kosher market, corporates and our local community, and most importantly, increases the opportunities for employment for people with disability. The Eisen Family Private Fund has helped open doors for us so that this service can grow. It is partnerships like these that form the solid foundations of a grassroots social enterprise.

We are excited for the future growth of All Things Equal and for the significant role we can play in changing the employment landscape for people with disability. Thank you again to the Eisen Family Private Fund for the huge contribution in supporting us towards building a financially sustainable future!



CURIOSITY SNAPSHOT



NATIONAL JUSTICE PROJECT

The National Justice Project (NJP) is a proudly independent, not-for-profit human rights legal and civil rights service. We fight for justice, fairness and inclusivity by eradicating systemic discrimination. Together with our clients and partners we create systemic change and amplify the voices of communities harmed by government inaction, harm and discrimination.

Through legal action, advocacy, education, and collaborative projects, we defend and promote the rights of people from diverse communities who have experienced systemic racism and discrimination in healthcare and legal systems, immigration detention, prisons and juvenile detention, and policing.

Thanks to the support of the Eisen Family Private Fund, NJP has offered internships to two culturally and linguistically diverse (CALD) lawyers over a three-year period from 2022-2024.



“It is a privilege to amplify our clients’ voices, supporting them as they take on these often-insurmountable cases, being confided in about some of the darkest times and emotions in our clients’ lives and witnessing their courage and strength in the face of it all. This is the way I had always imagined practicing law, and I’m grateful that I get to do it at NJP.”

**- CALD legal professional,
supported by EFPF**

This support has directly enabled:

1. Increased reach of NJP services to CALD people harmed by discrimination in detention, health and prison systems and other government services.
2. Increased capacity for CALD people to take on cases and advocate in relation to policing, youth and health justice, disability, indefinite detention and discrimination; and
3. Increased experience for CALD lawyers in using strategic legal action to create law reform, policy and attitudinal change, improved services, accountability and compassion.

By providing internship opportunities within NJP, the Eisen Family Private Fund is enabling the next generation of legal professionals to connect and serve those with lived experience, as well as growing the compassion quotient within Australia and the legal profession.

The National Justice Project is committed to creating a better and fairer Australia for everyone. Our goal is to end discrimination, from asylum seekers to First Nations people. The events of the past few months show that this goal is more urgent than ever.

But with committed, passionate people and philanthropic entities like the Eisen Family Private Fund supporting us, together we know we can fight injustice.



with thanks to our

IMPACT PARTNERS



with deep respect and

ACKNOWLEDGEMENT

The Eisen Family Private Fund pays respect to Aboriginal and Torres Strait Islander elders past, present and emerging. We acknowledge the immense leadership of First Nations people protecting Country, as they have done since time immemorial, and that this Country was never ceded.

EISEN FAMILY PRIVATE FUND

Board

- Samantha Eisen (Chair)
- Anthony Eisen (Director)
- Barry Odes (Responsible Person)

Staff

- Fiona Higgins (Executive Officer)

Administration & Compliance

- Australian Philanthropic Services





Eisen Family Private Fund
C/- Australian Philanthropic Services
Level 7, 130 Pitt Street Sydney NSW 2000
giving@eisen.com.au | www.eisen.com.au | 02 9779 6333
